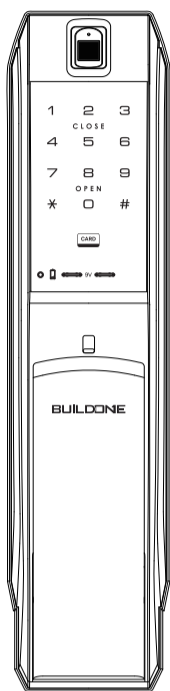


# DIGITAL DOOR LOCK USER MANUAL

BO-DP9100FS   
 BO-DP9100FSK



**WARNING : BE WELL-INFORMED OF HOW TO OPERATE MANUAL OPEN/CLOSE SWITCH IN CASE OF EMERGENCY**

The information of this user manual may vary without any notices to improve the performance of this product.  
 1. Voltage: DC 6V  
 2. Be sure to correctly match the ends (+/-) when inserting the batteries. Wrong insertion direction or ends of batteries may cause batteries to burst or liquid leakage.  
 3. Replace all batteries at the same time and do not mix used batteries with new batteries.  
 4. Built-in fire sensor activation temperature: 60°C(±10°C)

MANUFACTURER	BUILDONE CO., LTD.
MODEL	BO-DP9100FS, BO-DP9100FSK
ADDRESS	22-12 CHEONGDAM-RO, 39BEON-GIL, YANGJU-SI, GYEONGGI-DO, 11459
COUNTRY OF ORIGIN	REPUBLIC OF KOREA
SERVICE CENTER	PLACE OF PURCHASE

## Safety Cautions

**WARNING** This section contains important information to ensure the user's safety and prevent potential damage to property. Please read this section carefully and use the product accordingly.

- Do not disassemble the product, as this may cause malfunction and damage the product.
- Do not expose the product to flammable materials such as gas lighters. It may cause product malfunction.
- Do not operate the product with wet hands and keep liquids away from the product, as it can disturb an electronic circuit.
- Do not use the excessive force or remodel the product.
- Avoid exposure to direct sunlight or high temperature.
- Do not install the product in direct exposure to rain or snow.
- Do not use water, benzene or alcohol when cleaning the product, as these fluids can cause product malfunction.
- Use AA alkaline batteries. Rechargeable batteries may cause product malfunction.

## Note

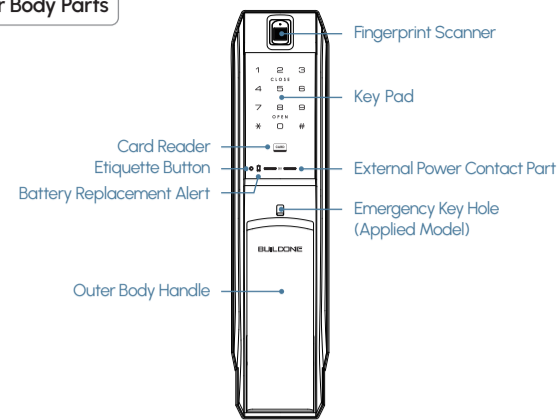
**WARNING**

- Make sure to open the front door and carry an emergency key or card with you when registering passwords for the first time or changing them.
- The factory default password is "1234". Be sure to change your password after installing the product.
- Existing passwords will be deleted if the registration mode is changed to general or individual mode. New passwords need to be registered.
- We are not responsible for any damages caused by password theft.
- For your safety, we recommend you to use RF-card which the manufacturer provided. Buildone confirms that ISO 14443 Type A certified RF-card and tag to be used with the digital doorlocks. Buildone is not responsible with the cases that customers use other type RF-card and tag, credit card, smart card and mobile phone.

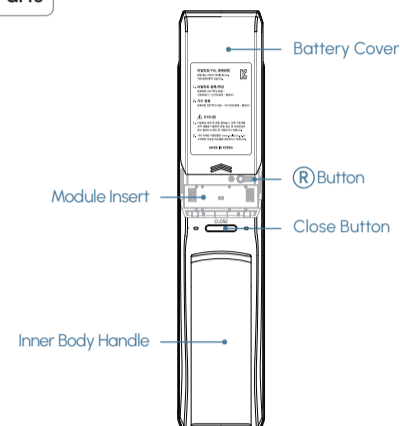
## Product Name and Components

### Product Name

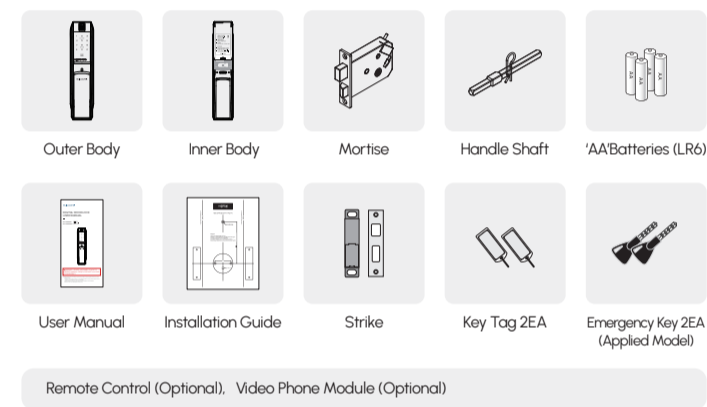
#### Outer Body Parts



#### Inner Body Parts



### Product Components



## How to use

**CHECK** All registration and setting are activated only when the door is opened.

### General Registration Mode

#### Adding User Password (Max. 1 Password)

> **PASSWORD 4~12** >   
 Open the battery cover on the indoor unit of the doorlock with the door open, press [R] button. Press [1] and enter password (4~12 digit). Press [\*] to complete the registration.

**CHECK**  
 ※ Existing password will be deleted if a new password is added.

#### Adding Key Tags (Max. 50 Cards)

> **CARD** >   
 Open the battery cover on the indoor unit of the doorlock with the door open, press [R] button. Press [2] and hold a key tag to the card reader (can be registered continuously). Press [\*] to complete the registration.

**CHECK**  
 ※ Register all key tags at once, all existing key tags will be deleted if new key tags are registered.

#### Adding Fingerprints (Max. 100 Fingerprints)

> **Fingerprint 3 TIMES** >   
 Open the battery cover on the indoor unit of the doorlock with the door open, press [R] button. Press [3], scan a fingerprint on the scanner 3 times (can be registered continuously). Press [\*] to complete the registration.

#### Deleting All Key Tags

> **2** > **5 sec**  
 Open the battery cover on the indoor unit of the doorlock with the door open, press [R] button. Press [0], [2] on the key pad. Press [#] for 5 seconds to complete.

#### Deleting All Fingerprints

> **3** > **5 sec**  
 Open the battery cover on the indoor unit of the doorlock with the door open, press [R] button. Press [0], [3] on the key pad. Press [#] for 5 seconds to complete.

### Mode Setting

Please note all existing data will be deleted and initialized when changing mode.

**CHECK**  
 ※ Existing intercom and remote control will not be deleted.  
 ※ The factory default setting is general registration mode.  
 ※ Set 4-12 digit numbers passwords, except [\*] and [#].

#### Changing to General Registration Mode

> **# 1 4 7** > **5 sec**  
 Open the battery cover on the indoor unit of the doorlock with the door open, press [R] button. Enter [0], [#], [1], [4], [7] on the key pad. Press [#] for 5 seconds to complete.

#### Changing to Individual Mode

> **# 3 6 9** > **5 sec**  
 Open the battery cover on the indoor unit of the doorlock with the door open, press [R] button. Enter [0], [#], [3], [6], [9] on the key pad. Press [#] for 5 seconds to complete.

### Individual Registration Mode

Individual mode is not recommended except IoT products

#### Adding User Password (Max. 20 Passwords)

> **No. 1~20** > \* button icon"/> > **PASSWORD 4~12** > \* button icon"/>  
 Open the battery cover on the indoor unit of the doorlock with the door open, press [R] button. Press [1] on the key pad, assign password number (1~20) press [\*]. Enter password (4~12 digit) press [\*] to complete the registration.

**CHECK**  
 ※ Factory default password for Password #1 (Individual mode) is 1234.

#### Adding Key Tags (Max. 50 Cards)

> **No. 1~50** > \* button icon"/> > **CARD**  
 Open the battery cover on the indoor unit of the doorlock with the door open, press [R] button. Press [2] on the key pad, assign card number (1~50) press [\*]. Hold a key tag to the card reader to complete the registration.

**CHECK**  
 ※ Continuous card registration is not possible in individual registration mode.

#### Adding Fingerprints (Max. 100 Fingerprints)

> **No. 1~100** > \* button icon"/> > **Fingerprint 3 TIMES**  
 Open the battery cover on the indoor unit of the doorlock with the door open, press [R] button. Press [3] on the key pad, assign fingerprint number (1~100) press [\*]. Scan a fingerprint on the scanner 3 times to register.

### Deleting User Password

#### Deleting a user password

> **1** > \* button icon"/> **No. 1~20** >

**CHECK**  
 ※ Individual mode Password #1 can not be deleted, recommended to change it before use.

#### Deleting all user passwords

> **1** > **5 sec**  
 Open the battery cover on the indoor unit of the doorlock with the door open, press [R] button. Press [0], [1] on the key pad. Press [#] for 5 seconds to complete.

**CHECK**  
 ※ If all passwords are deleted, default Password #1 is 1234.

### Deleting Key Tags

#### Delete a key tag

> **2** > \* button icon"/> **No. 1~50** > # button icon"/> **5 sec**  
 Open the battery cover on the indoor unit of the doorlock with the door open, press [R] button. Press [0], [2], [\*] on the key pad, select card number (1~50) to be deleted. Press [#] for 5 seconds to complete.

#### Delete all key tags

> **2** > **5 sec**  
 Open the battery cover on the indoor unit of the doorlock with the door open, press [R] button. Press [0], [2] on the key pad. Press [#] for 5 seconds to complete.

### Deleting Fingerprints

#### Delete a fingerprint

> **3** > \* button icon"/> **No. 1~100** > # button icon"/> **5 sec**  
 Open the battery cover on the indoor unit of the doorlock with the door open, press [R] button. Press [0], [3], [\*] on the key pad, select fingerprint number (1~100) to be deleted. Press [#] for 5 seconds to complete.

#### Delete all fingerprint

> **3** > **5 sec**  
 Open the battery cover on the indoor unit of the doorlock with the door open, press [R] button. Press [0], [3] on the key pad. Press [#] for 5 seconds to complete.

## Adding/Changing Master Password

### Add a master password (Max. 1 password)



Open the battery cover on the indoor unit of the doorlock with the door open, press [R] button

Press [5], [\*] on the key pad, enter **password (4~12 digit)**

Press [\*] to complete the registration

### Change the master password



Open the battery cover on the indoor unit of the doorlock with the door open, press [R] button

Press [5], [\*] on the key pad, enter **current master password (4~12 digit)** press [\*]

Enter **new master password (4~12 digit)** press [\*] to complete the registration

## Adding/Deleting Master Card (Master Password Required)

### Add a master card (Max. 5 cards)



Open the battery cover on the indoor unit of the doorlock with the door open, press [R] button

Press [6], [\*] on the key pad, enter **current master password** and press [\*]

Hold a key tag to the card reader (repeat to add additional cards), press [\*] to complete

### Delete all master cards



Open the battery cover on the indoor unit of the doorlock with the door open, press [R] button

Press [0], [6], [\*] on the key pad, enter **current master password** and press [\*]

Enter [0], [0] on the key pad, press [#] for 5 seconds

#### CHECK

- ※ Delete all registered master cards and re-register if a master card is lost.
- ※ Register all master cards at once, all existing master cards will be deleted if new master cards are registered.

## Initializing Master (Delete all Master Cards + Master Password)



Open the battery cover on the indoor unit of the doorlock with the door open, press [R] button

Press [0], [5], [\*] on the key pad, enter **current master password** and press [\*]

Enter [0], [0] on the key pad, press [#] for 5 seconds to complete

## Additional Features

### Features

- Open the battery cover on the indoor unit of the doorlock with the door open, press [R] button

## Additional Setting

1. Adding Intercom (Max.1 Intercom)	[R] > [4] [1] [*] > Intercom [REGISTER] ※ Existing intercom will be deleted if a new intercom is registered.
2. Adding Additional Intercom (Max. 5)	[R] > [4] [3] [*] > Intercom [REGISTER] ※ Register within 20 seconds > [*] ※ Press [Register] button on intercom to register continuously.
3. Adding Remote Control (Max.10 Remote Controls)	[R] > [4] [2] [*] > Remote control [OPEN] > [*] (can be registered continuously)
4. Delete All Remote Control	[R] > [0] [4] > [#] 5 sec
5. Auto Lock Setting	[R] > [7] [1] [*] ※ Factory default setting is 2 seconds
6. Auto Lock Set Time	[R] > [7] [4] [*] (1 second after sensor detection) [R] > [7] [5] [*] (2 seconds after sensor detection)
7. Auto Lock Deactivate	[R] > [7] [2] [*]
8. Double Lock Mode (Inside) Setting	With the door locked, press [CLOSE] 5 sec
9. Double Lock Mode (Inside) Deactivate	1. With the door locked, press [CLOSE] 5 sec 2. Open the door with Manual Open/Close Switch
10. Double Lock Mode (Outside) Setting	With the door locked, enter the [PASSWORD] > [#] 5 sec
11. Double Lock Mode (Outside) Deactivate	Open with [PASSWORD] / [CARD] / Fingerprint from outside
12. One-Time Password Setting	With the door locked [#] > [Registered PASSWORD] > [*] > [One-Time PASSWORD 4~12] > [*] ※ One-Time Password will be deleted after use
13. Volume Setting	[R] > Mute [8] [1] [*] Low [8] [2] [*] High [8] [3] [*]
14. Initialization	[R] > [0] #18990372 > [#] 5 sec ※ Password, key tag, Fingerprint, intercom, remote control, and all registered data will be deleted. / Initialize to factory default setting / Factory Default Password is [234]

[www.lockkorea.com](http://www.lockkorea.com)  
[www.kaiserplus.com](http://www.kaiserplus.com)

## Product Features

### 1. Etiquette Mode

Press etiquette button and open with password or card without the sound. (one time use)

### 2. Fake Password Input Function (Prevent Password Exposure)

- Use when concerned about password exposure
- Enter random numbers before or after the password (Maximum 20 digit Number)

### 3. Dead Bolt Jam Notification

If the door is not fully closed or dead bolt (locking mechanism) fails to lock over three times, "Door is unlocked" announcement will be generated. (Key pad flashes 4 times)

### 4. Door Open Notification

If door is open in auto lock mode, alarm will be generated for three times at intervals of 5 seconds.

### 5. Opening the Door from Outside (Password)

Touch the key pad and enter the user password followed by the [\*] button.

### 6. Opening the Door from Outside (Key Tag)

Hold a key tag near the card reader.

### 7. Opening the Door from Outside (Fingerprint)

Place the registered fingerprint on the fingerprint scanner.

### 8. Opening the Door with Remote Control

Press [Open] button on the remote control

### 9. Opening the Door with Emergency Key (Applied Model)

Insert the emergency key and open in case of product malfunction (Emergency key must be stored separately.)

## Alarm Function

### 1. Intrusion Detection Function

This function generates an over 80dB alarm for one minute when an attempt is made to open the door forcefully. It will be activated 7 seconds after the door is locked. (Alarm can be deactivated with user password and card)

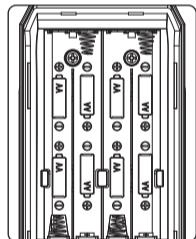
### 2. Prank Prevention Function

If wrong password and card is used five times in a row to open the door, an alarm sound is generated and the door lock will be suspended for one minute. (Deactivated when the door is opened from inside)

### 3. Fire Alarm Function

The temperature sensor detects the abnormal increase of room temperature (60°C ± 10°C), an alarm over 80db is generated and the door is automatically opened.

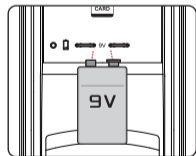
## Battery Replacement



WARNING

- Eight 1.5V "AA" batteries can be inserted (Including 4 batteries).
- Duration of Battery Use : 12 months (average use of 10 times a day)
- Battery Replacement Notification : Replace all batteries when battery alarm melody sounds. Open battery cover from inner body and replace all 1.5V "AA" batteries. Make sure to correctly match the ends +/- when inserting and do not mix used batteries with new batteries.

## Emergency Battery Use



WARNING

- If batteries are completely discharged, contact 9V battery to external power contact part, open with user password or card.
- Be sure to connect external power contact point with the battery. (External power contact part has no polarity)

## Product Specifications

Item	Specifications
Voltage	Four AA Alkaline 1.5V Batteries (LR6) (DC 6V)
Emergency Power Source	9V battery (6LF22) (sold separately)
Operation Method	Electronic control method (password, NFC, Fingerprint, emergency key (applied model))
Product Dimensions (mm)	Inner Body : 83.4(W) X 369(H) X 69.3(D) Outer Body : 84(W) X 352(H) X 68(D)
Weight	4.04 kg (including inner and outer bodies)

※ The information of this user manual may vary without any notices to improve the performance of this product.

## Memo



BUILDONE